

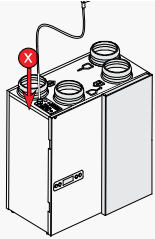


**Key Features**

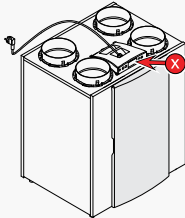
- View Status
- Moderate Parameters
- Error notifications
- Log Data
- View graphics

**Brink Climate Systems**

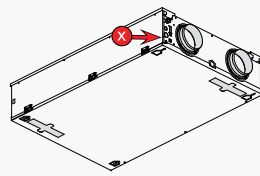
Wethouder Wassebaalestraat 8 7951 SN Staphorst  
Mailbox 11 NL-7950 AA Staphorst The Netherlands  
T. +31 (0) 522 46 99 44  
F. +31 (0) 522 46 94 00  
info@brinkclimatesystems.nl  
www.brinkclimatesystems.nl



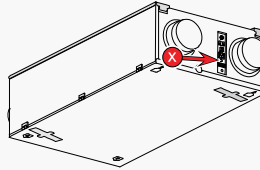
**Renovent Excellent 180 (Plus)**



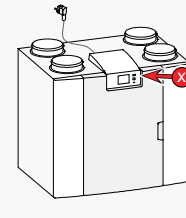
**Renovent Excellent 300/400 (Plus)**



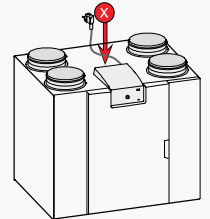
**Renovent Sky 150 (Plus)  
Renovent Sky 200 (Plus)**



**Renovent Sky 300 (Plus)**



**Flair WTW serie (Plus)**



**Flair NL (Plus) series  
WARNING: adapter cable required. Article NR. 532233**

**1 Introduction**

This service Tool allows you to moderate the following appliances with a notebook:

- Renovent Excellent 180/300/400 (Plus)
- Renovent Sky 150/300 (Plus)
- Flair HRV series (Plus)

De installer can perform the next operations:

1. Prepare installation of the appliance
2. View actual status
3. View and edit parameters
4. View Errors
5. Perform diagnostic operations
6. View statistics in a chart

**1.1 Package items**

- Service cable
- Quick Start manual

**1.2 Minimal system requirements**

- Microsoft Windows XP
- Service Pack 2

**2 Installation**

**Important: Don't connect the service cable during installation!**



Take following steps to perform installation:

1. First install the USB cable driver (eBus-Driver) from the Brink Climate Systems website:  
<https://www.brinkclimatesystems.nl/nl-nl/professionals/service/tools/brink-service-tool>
2. Then instal "The service software" Brink Service Tool from the Brink website.
3. The installation wizard starts immediately after downloading.



4. After installation the Service Tools starts automatically.

**Important: Connecting the cable should be performed in this specific order!**

5. First connect USB cable.

6. Then connect the other end of the service cable to the appliance (see red arrow with X in the appliance images above).

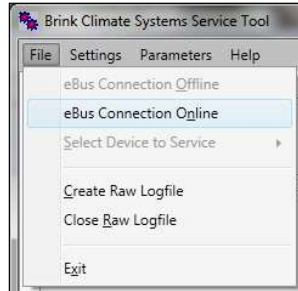
If error occurs 'Attempting to load FTD2XX from...':

- Close Brink Service tool.
- Check connection of USB cable.
- Check if driver is installed.
- If necessary, repeat installation procedure.

7. The appliance connected to the Brink Service Tool will automatically be selected.

8. Connection with the appliance is made automatically. Start screen with current status is displayed.

If no automatic connection is made with the appliance, set this at "File".  
File > eBus Connection Online



**3 Get started**

**3.1 Mainscreen**

- A Status overview
- B Toolbar
- C Tab bar
- D Status bar

**3.2 Status overview (A)**

In the status overview you can view information about the appliance.

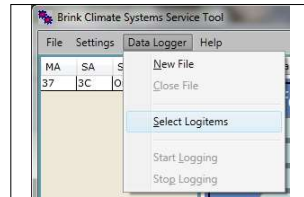
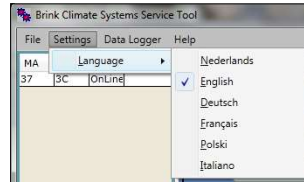
1. Fan Info
2. Environment Info
3. Operation Info

The value fields can have different indication colors:

- Green** = Valid value(s)
- Red** = Value(s) not yet available
- Grey** = Value(s) not available

**3.3 Toolbar (B)**

1. File
2. Settings
3. Data Logger
4. Help



**3.4 Tab bar (C)**

1. Current status
2. View and edit Parameters
3. Error overview
4. Diagnostics
5. Graphics

An Overview of the first 4 service menu tabs can be found in the right column.

**3.5 Status bar (D)**

**3.5.1 Status service tool**

- Online mode
- Offline mode

**3.5.2 Selected Device**

Notification of selected appliance.

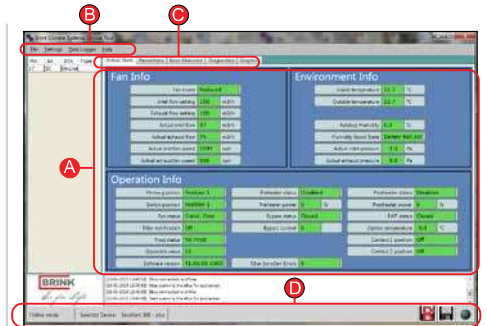
**3.5.3 Data Log Status**

- Logging rough data
- Real time Data Log in progress

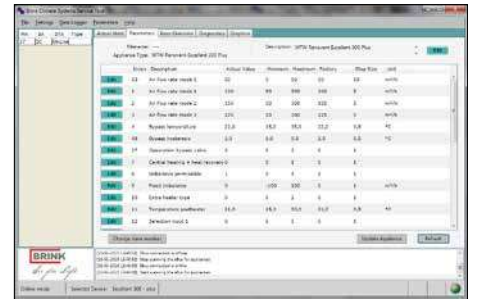
**3.5.4 Status LED**

The LED sphere in the lower right corner indicates the connection status.

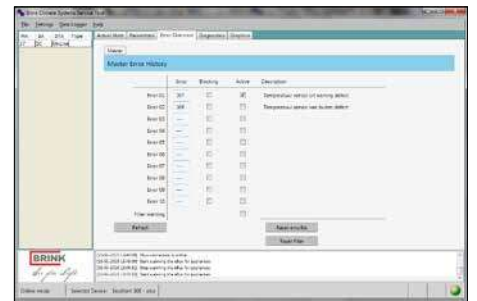
- Grey: no connection
- Red: no EBus signal
- Green: EBus signal
- Green pulsing: Communication with appliance
- Yellow: Communication with errors



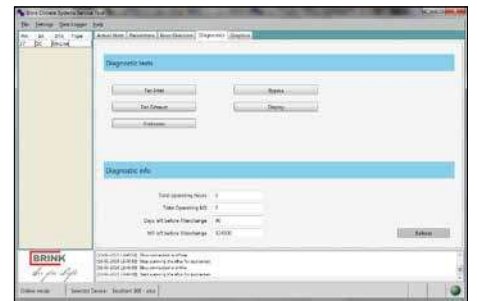
**Start screen with display of Current status**



**View and edit parameters**



**Error overview**



**Diagnostics**