



**UK**  
Key Features

- View Status
- Moderate Parameters
- Error notifications
- Log Data
- View graphics

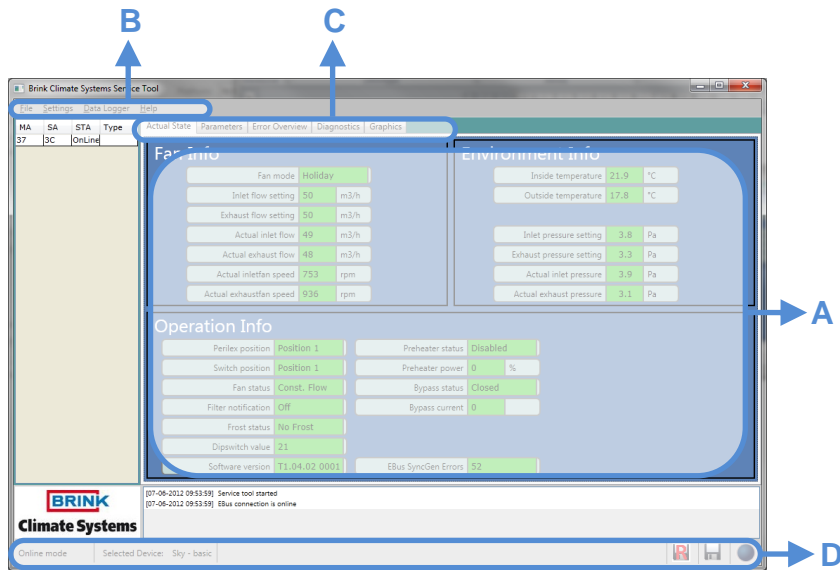


Figure 1: Service Tool Interface

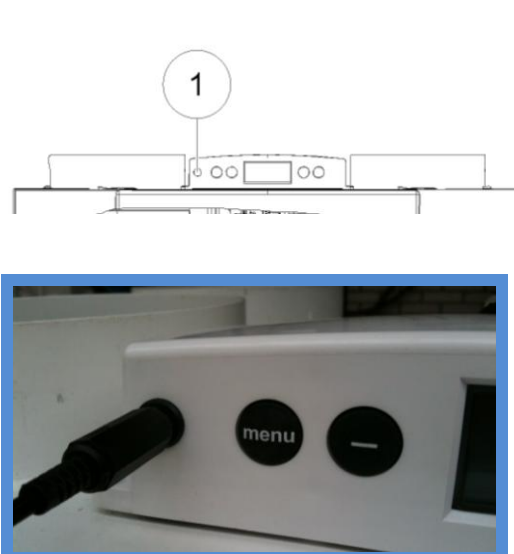


Figure 2: Service connection Renovent Excellent

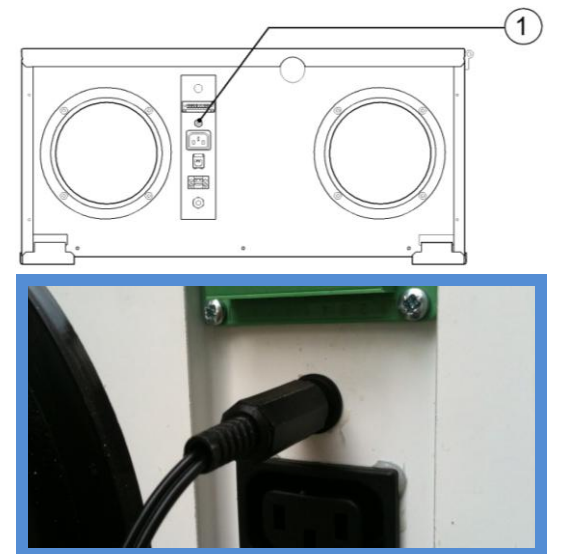


Figure 3: Service connection Renovent Sky

**1 Introduction**

This service Tool allows you to moderate the following appliances with a notebook:

- Renovent Excellent – Basic
- Renovent Excellent – Plus
- Renovent Sky – Basic
- Renovent Sky – Plus

De installer can perform the next operations:

1. Prepare installation of the appliance
2. View actual status
3. View and edit parameters
4. View Errors
5. Perform diagnostic operations
6. View statistics in a chart

**1.1 Package items**

- Service cable
- Quick Start manual

**1.2 Minimal system requirements**

- Microsoft Windows XP
- Service Pack 2

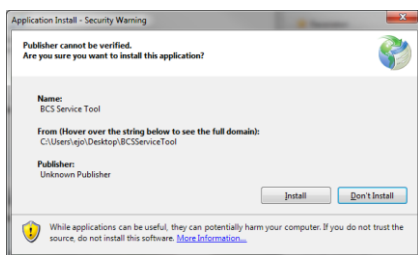
**2 Installation**

**Important: Don't connect the service cable during installation!**



take following steps to perform installation :

1. Install the USB cable driver from the Brink Climate Systems website: [http://www.brinkclimatesystems.com/...](http://www.brinkclimatesystems.com/)
2. Install Service Tool [http://www.brinkclimatesystems.com/...](http://www.brinkclimatesystems.com/)
3. The installation wizard starts immediately after downloading.



4. After installation the Service Tools starts automatically.

**Important: Connecting the cable should be performed in this specific order**

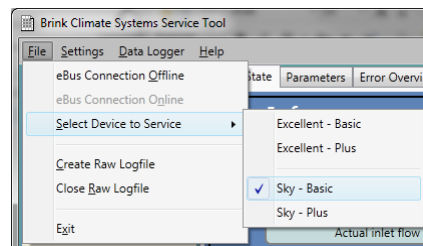
5. First connect USB cable
6. Then connect the other end of the service cable to the device (figure 2 and 3)

If error occurs 'Attempting to load FTD2XX from...':

- Close service tool
- Check connection of USB cable
- Check if driver is installed
- If necessary, repeat installation procedure

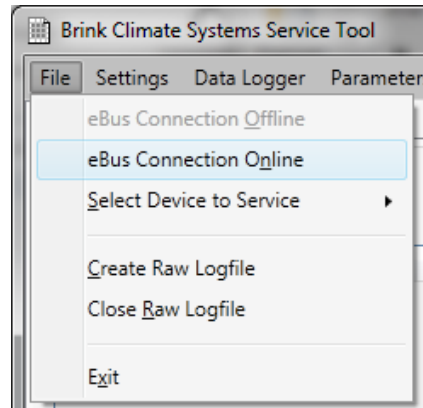
7. Set application device:

File > Select Device to Service > Select your device



8. Establish connection with device:

File > eBus Connection Online



**3 Get started**

**3.1 Mainscreen**

- A. Status overview
- B. Main menu
- C. Service menu
- D. Connection status bar

**3.2 Status overview (A)**

In the status overview you can view information about the device

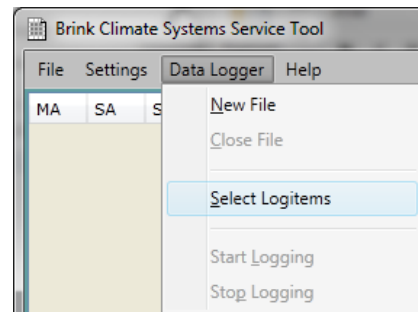
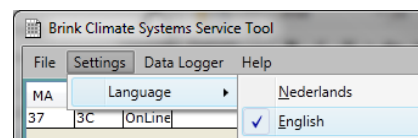
1. Fan Info
2. Environment Info
3. Operation Info

The value fields can have different indication colors:

- Green** = Valid value
- Red** = Value not yet available
- Grey** = Value not available

**3.3 Main menu (B)**

1. File
2. Settings
3. Data logger
4. Help



**3.4 Service Menu (C)**

1. Current status
2. View and edit Parameters
3. Error overview
4. Diagnostics
5. Graphics

An Overview of the first 4 service menu tabs can be found in the right column.

**3.5 Connection status bar (D)**

**3.5.1 Connection status**

- Online mode
- Offline mode

**3.5.2 Selected Device**

Notification of selected appliance

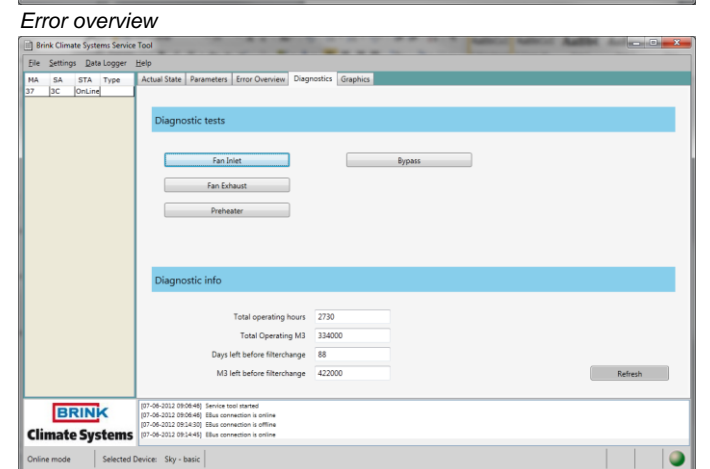
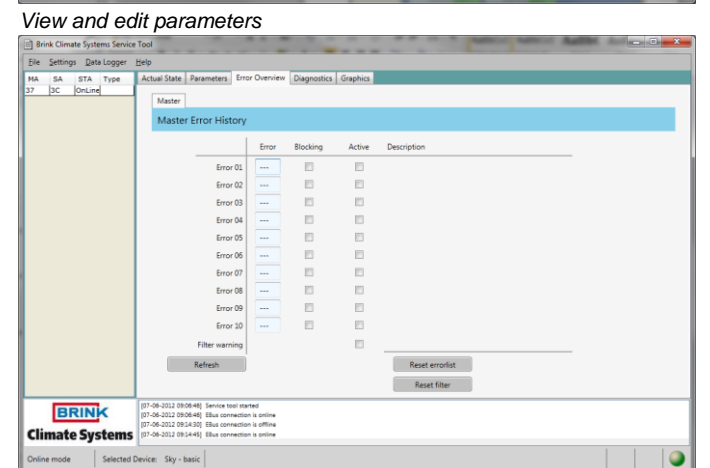
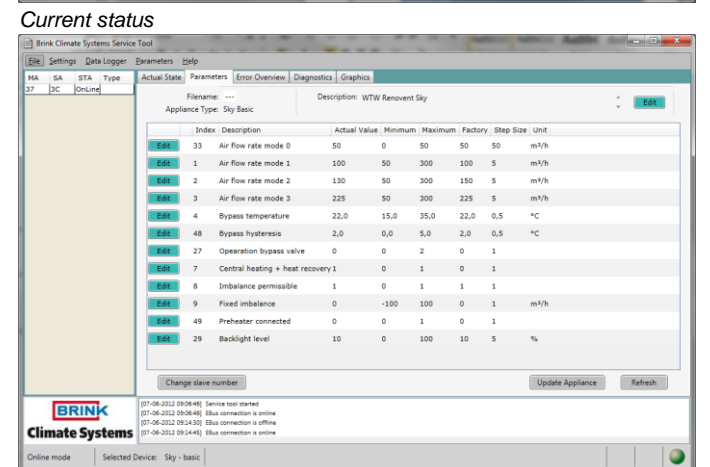
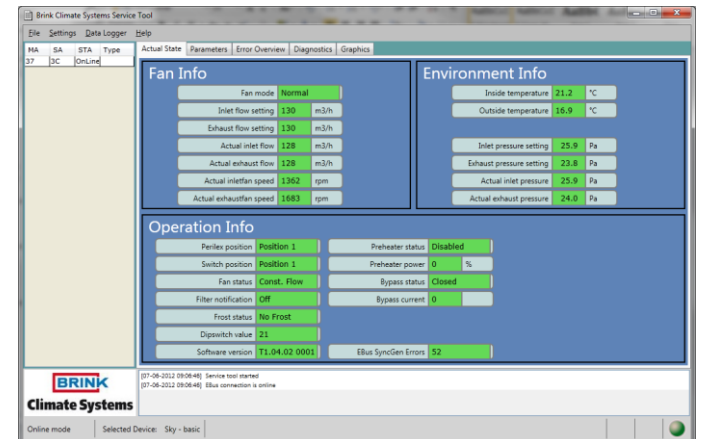
**3.5.3 Data Log Status**

- Logging rough data
- Real time Data Log in progress

**3.5.4 Status LED**

The LED sphere in the lower right corner indicates the connection status

- Grey: no connection
- Red: no EBus signal
- Green: EBus signal
- Green pulsing: Communication with appliance
- Yellow: Communication with errors



Diagnostics